

# Galaxy A14 5G

Display	16.72cm (Full HD+, Infinity-V)#
Processor	Exynos 1330 processor, Octa-core, 5nm
Battery	5000mAh (typical)**
Camera	Rear: Triple Camera, 50MP Main Front: 13MP
Memory	Memory upto 16GB with RAM Plus* Storage upto 128GB~ & expandable upto 1TB with MicroSD card~.



● Dark Red



● Light Green



● Black

Image simulated for representational purpose only. \*4/6/8 GB RAM models will support up to 4/6/8 GB of internal storage that can be used as virtual memory to improve app performance. Internal memory capacity may vary by country or carrier. \*\*Actual Battery life may vary depending on network environment, usage patterns and other factors. Individual results may vary. Typical value tested under third-party laboratory conditions. Typical value is estimated average value considering the deviation in battery capacity among the battery samples tested under IEC 61960 standard. Rated minimum capacity is 4860mAh. Galaxy A14 is 5G ready. 5G Network availability and actual speed may vary depending on country, network provider and user environment. #Measured diagonally. Galaxy A14 5G main screen size is 16.72 cm in the in the full rectangle and 16.30 cm accounting for the rounded corners. Actual viewable area is less due to rounded corners and the camera cut-out. ~Actual internal storage may vary. ~MicroSD card sold separately. Colors as per availability.

## 1 5G. We're already connected



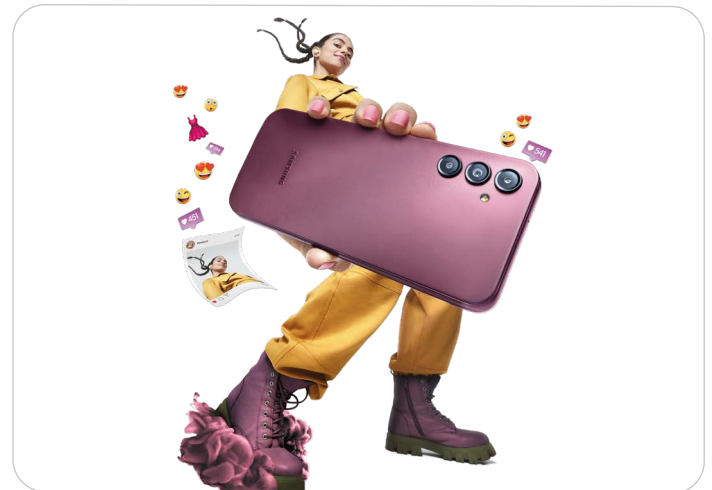
On the next-generation mobile data network, the power of 5G fast speeds\* changes the way you experience and share content - from super smooth gaming and streaming, to ultra-fast sharing and downloading.

## 2 Amp up your style



A stylist minimalist design meets pop color# in A14 5G.

## 3 Amp up your design game



The flat, linear camera housing makes one seamless uni-body silhouette

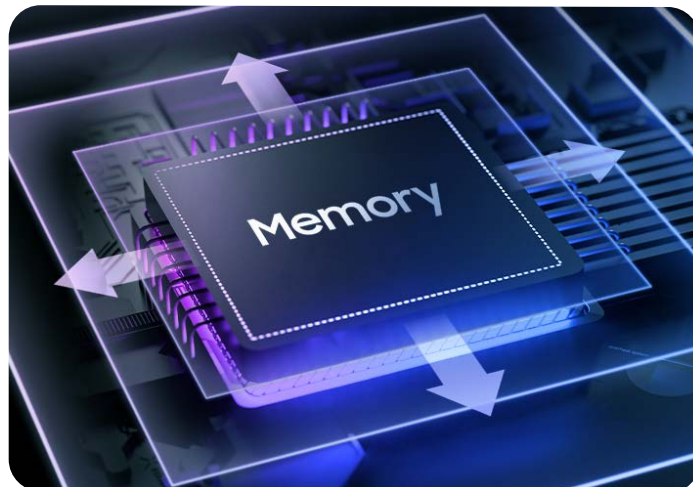
- Refined and polished camera deck
- Laser pattern backcover

## 4 Amp up your speed



Galaxy A14 5G combines the Octa-core processor with 5G connection\* to provide the performance and speed you can count on. Enjoy smooth gaming and streaming, download and share your favorite videos in a flash.

## 5 Amp up your multi-tasking with RAM Plus#



Your Galaxy A14 5G smoothes things out when you're short-handed while multi-tasking, providing you just that extra room needed.

## 6 Amp up your viewing experience



Expand your view to the 16.72cm Infinity-V Display\*\* on Galaxy A14 5G and 16.30cm see what you've been missing. Experience the 90Hz refresh rate with high-definition and true to-life colors in FHD+ display technology.

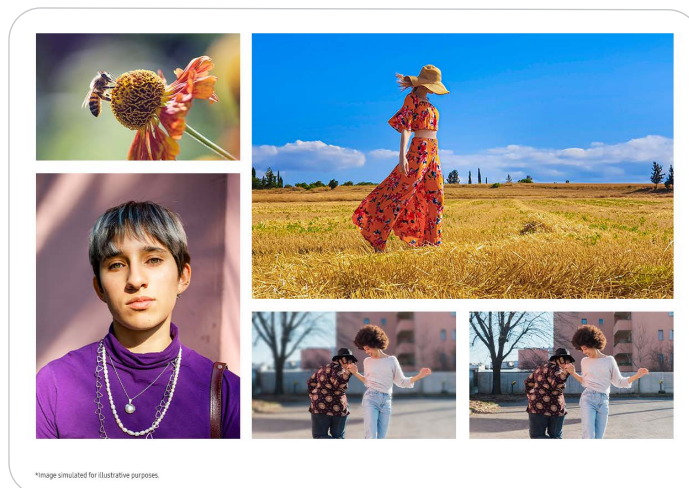


## 7 Amp up your clicks



Capture awesome moments with Galaxy A14 5G.

Life's dear moments, captured and saved



A14 5G is for all your favourite moments. The 50MP Main camera<sup>#</sup> captures magnificent landscape photos, Depth camera 2MP<sup>#</sup> (f/2.4) adds stunning dimensions, Macro camera 2MP<sup>#</sup> (f/2.4) gets fine details, and Front camera takes fabulous selfies.

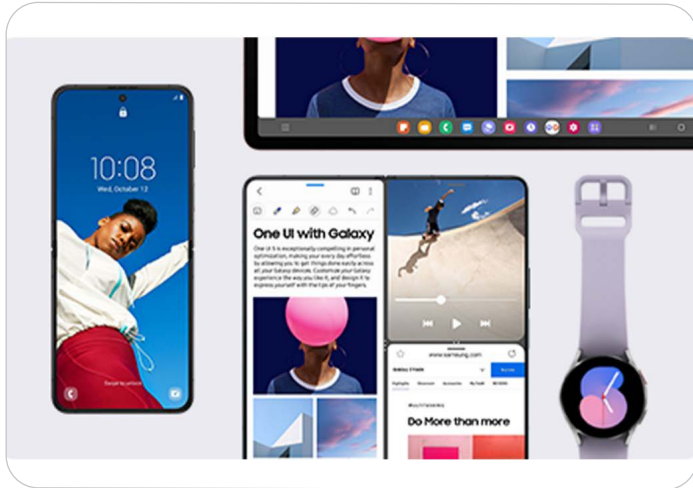
## 8 Amp up your power with an up to 2-day-lasting battery<sup>~</sup>



Stay with your Galaxy A14 5G from dawn to night for work or play. The 5,000mAh (typical)<sup>~</sup> battery powers your phone up to 2 days<sup>~</sup>.

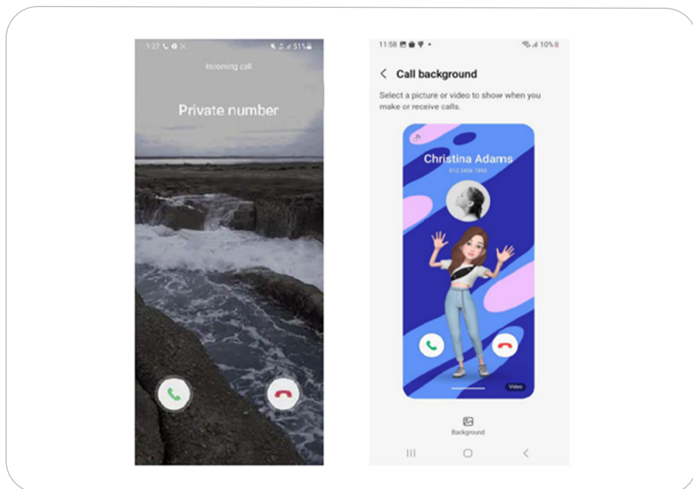
Image simulated for representational purposes only. <sup>#</sup>Results may vary depending on light or shooting conditions. <sup>~</sup>Actual Battery life may vary depending on network environment, usage patterns and other factors. Individual results may vary. Typical value tested under third-party laboratory conditions. Typical value is estimated average value considering the deviation in battery capacity among the battery samples tested under IEC 61960 standard. Rated minimum capacity is 4860mAh. 5G network availability and actual speed may vary depending on country, network provider and user environment.

## 9 Amp up your experience with One UI



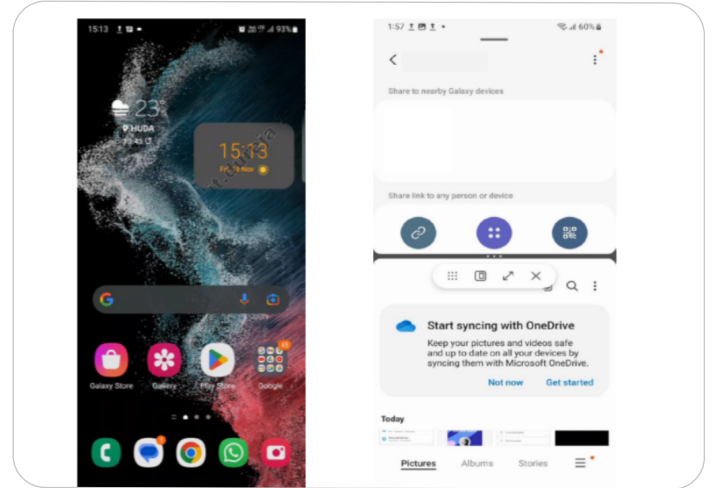
Customize with personalization. Give way to a Galaxy experience that mirrors your style with the One UI#.

### B. Customise call backgrounds



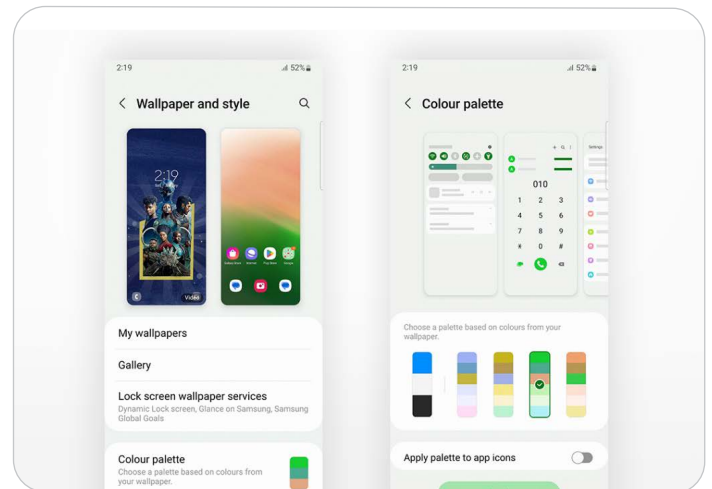
At a glance, figure out the person calling you. Set individual avatars to identify and deck up your smartphone as you like.

### A. Multi-task effortlessly



Accentuate the multi-tasker in you with the split-screen. Launch multi-windows with a single swipe to attain maximum output.

### C. Personalize your expressions



Personalise your widgets and wallpapers as per your style.

## 10 Amp up your security

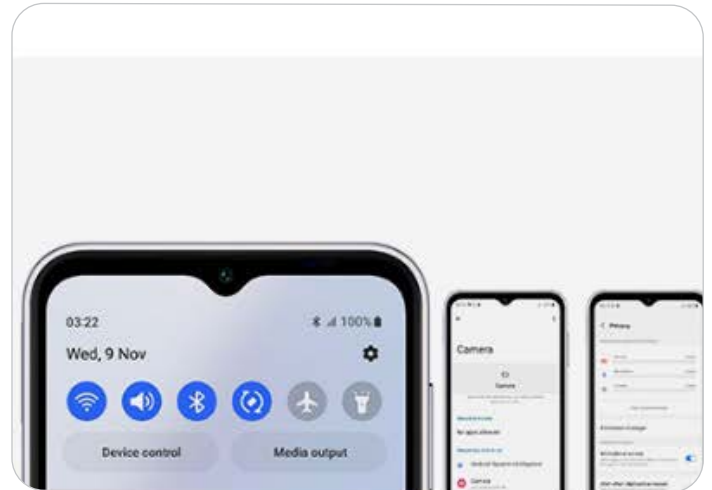
2 year OS upgrade and 4 years security update.

### A. Side Fingerprint Sensor



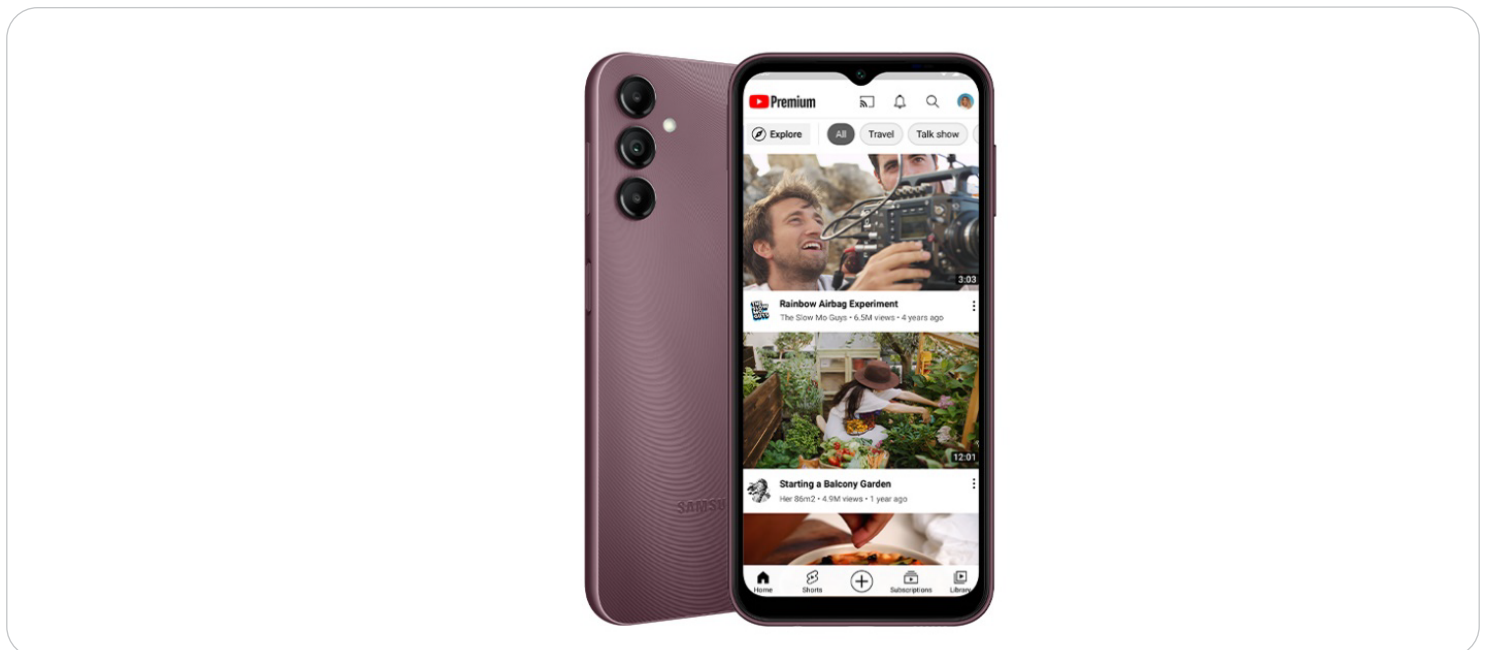
Your security, double-checked by the side fingerprint sensor accessible only by your fingerprint.

### B. Mic and Cam indicator



View your phones overall security with phones dashboard and the green indicator will warn you if any apps is using mic or camera.

## 11 Watch YouTube uninterrupted



Get up to 2 months free of YouTube\* Premium and enjoy a seamless ad-free experience.

# Special Benefits



**Secure, effortless and contactless payments**

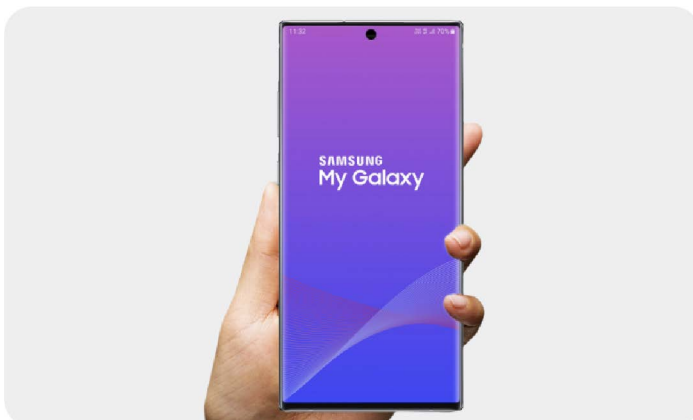
Samsung pay: the simple way

[Click to know more](#)



Knox security locks in your privacy

[Click to know more](#)



**Upgrade to the latest Galaxy every year**

Keep getting back from Samsung

[Click to know more](#)





## Samsung Care+



We've got you covered beyond the standard warranty.

With Samsung Care+ we will have you covered on accidental damages for up to 2 years, so you can enjoy your Galaxy smartphones, tablets or watches with utmost peace of mind.

### Covered with Care+



Samsung genuine parts



Authorised service centre repairs with expert technicians



Hassle-free claim process



Accidental damage repair\*



Extended warranty up to 2 years



Free pick-up from your home



# SAMSUNG



Please dispose of e-waste and plastic waste responsibly.  
For more information or for e-waste pick up,  
please call 1800 40 7267864 or 1800 5 7267864.

## Contact us



**WhatsApp**

1800 5 7267864



Live Chat



Samsung  
Members

## Follow us



samsungindia



Samsungmobileindia



SamsungIndia



SamsungIndia

Registered Address: Samsung India Electronic Pvt. Ltd.,  
C.I.N. - U31900DL1995PTCO71387, 6<sup>th</sup> Floor, DLF Center, Sansad Marg, New Delhi - 110001.

All features and specifications mentioned herein can be changed without prior notice. Log on to [www.samsung.com/in](http://www.samsung.com/in) for more details.  
Products shown herein are for representational purpose only, actual product may vary.