

# Galaxy S24 Series

## Galaxy S24

Camera	50 MP   12 MP Ultra-wide   10 MP Tele
Display	15.64 cm   Dynamic AMOLED 2X FHD+ (2340x1080)^
Memory	8GB   256/512GB~
Battery	4,000 mAh   Super-fast Charging#
Processor	4nm Processor   Exynos 2400

## Galaxy S24+

Camera	50 MP   12 MP Ultra-wide   10 MP Tele
Display	16.91 cm   Dynamic AMOLED 2X QHD+ (3120x1440)^
Memory	12GB   256/512 GB~
Battery	4,900 mAh   Super-fast Charging#
Processor	4nm Processor   Exynos 2400

## Galaxy S24 Ultra

Camera	200 MP   12MP Ultra-wide   50MP Tele (5x) 10 MP Tele (3x)
Display	17.25 cm   Dynamic AMOLED 2X QHD+ (3120x1440)^
Memory	12GB   256/512GB/1TB~
Battery	5000 mAh   Super-fast charging#
Processor	4nm Processor   Snapdragon 8 Gen 3*



## Galaxy S24 | S24+



Amber Yellow   Cobalt Violet   Onyx Black   Marble Gray

## Galaxy S24 Ultra



Titanium Yellow   Titanium Black   Titanium Gray   Titanium Violet

Image simulated for representational purposes only. Color availability may vary depending on country or carrier. S Pen embedded only in S24 Ultra. Galaxy S24 Series is 5G ready. Compatibility dependent upon 5G network availability, actual speed may vary depending on network provider and user environment in India. ^Measured diagonally, Galaxy S24 main screen size is 15.64cm/15.23cm with rounded corners and the camera hole. Measured Diagonally, Galaxy S24+ screen size is 16.91cm/16.45cm with rounded corners and the camera hole. Measures Diagonally, Galaxy S24 Ultra screen size is 17.25cm/17.22cm with rounded corners and the camera hole. Actual viewable area is less due to the rounded corners and camera hole. \*Actual Battery life may vary depending on network environment, usage patterns and other factors. Individual results may vary. Rated minimum capacity for Galaxy S24, S24+ and S24 Ultra are 3880mAh, 4755mAh and 4855mAh respectively. The battery samples are tested under IEC 61960 standard for Galaxy S24, S24+ and S24 Ultra. Fast charger sold separately. ~Storage options and availability may vary by carrier, country or region. ~Actual storage availability may vary depending on pre-installed software.

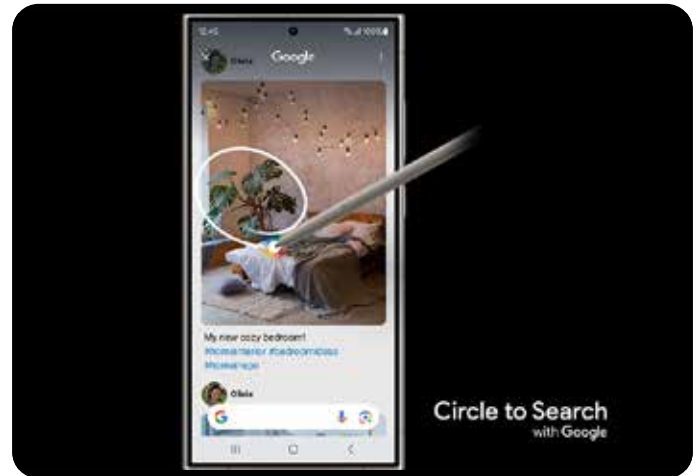
# Galaxy S24 Ultra

## 1 Galaxy AI\* is here



Welcome to the era of mobile AI. With Galaxy S24 Ultra in your hands, you can unleash whole new levels of creativity, productivity and possibility — starting with one of the most important device in your life. Your smartphone.

## 2 Circle it, find it. Just like that



A new way to search is here with Circle to Search. Stumble upon a photo of a plant so beautiful that you just have to know what it is? Circle it with your S Pen<sup>+</sup> or finger and ta-da, you'll get Google Search results. Now you can quickly get an answer without leaving your feed<sup>#</sup>.

## 3 Live Translate~ Simpler way to communicate



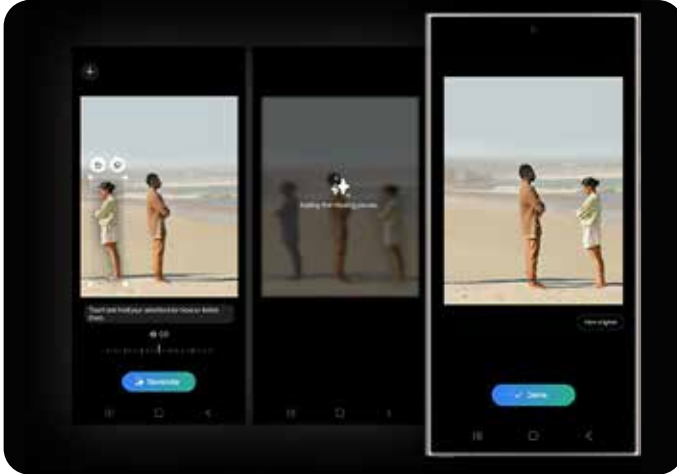
Now you can get real-time interpretation while you're on the phone. Break down language barriers like never before — even through messaging. Reply back in your own language — it'll get translated on their end too.

## 4 Summarize Notes in the blink of an AI



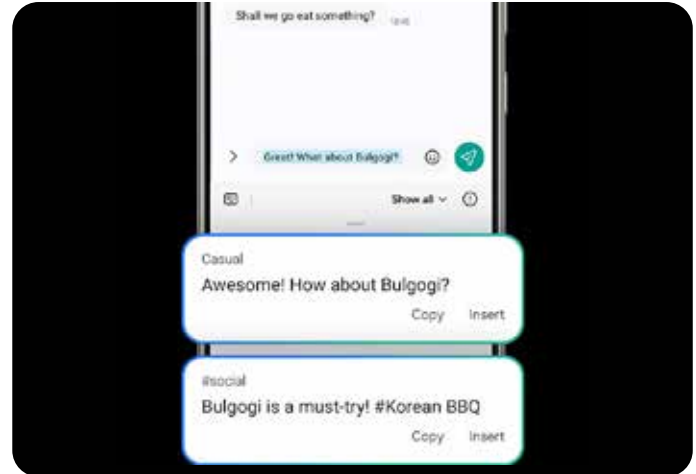
Note Assist<sup>^</sup> makes a long story short. Simply start writing, and format it into a clear, easy-to-review summary later. And when you're looking for an old note, the new covers show simple summaries — keeping your screen looking organized.

**5** Resize it, Retouch it.  
Just like that



Something out of place? Just move it in post. New AI-powered editing options let you get the photo you wanted, like relocating objects and intelligently filling in the space they left behind\*.

**6** Pick the right tone for your  
text with Chat Assist



Compose text messages with AI at the helm in Chat Assist\*\*. Now you can say what you mean with the voice of a professional, a close friend, even just politely. Go from "how do I say this?" to "why didn't I think of that?" in seconds.

**7** Armor up with titanium



Check out the upgrade — a durable shield of titanium built right into the frame~. Corning® Gorilla®^^ Armor helps protect your screen from scratches to keep your device looking beautiful. And don't let water dampen your spirits. Galaxy S24 Ultra is IP68 water and dust resistant^.

**8** Built-in S Pen+ writes a whole  
new chapter



The legacy of Galaxy Note is alive and well. Write, tap and navigate with precision your fingers wish they had on the new, flat display.

## 9 200MP. Capture details that rival reality



With the most megapixels on a Galaxy smartphone yet and AI processing, Galaxy S24 Ultra sets the industry standard for image quality every time you hit the shutter. What's more, the new ProVisual engine recognizes objects — improving color tone, reducing noise and bringing out detail.

## 10 Our most powerful Quad Tele zoom yet\*



Don't let long distance get you down. Now you can get 2x, 3x, 5x and even 10x close-ups with optical or optical quality zoom\*\*. Plus, the new, powerful Tele OIS~ is wider\* than before to stabilize the shot for less zoom-in blur.

## 11 ProVisual engine shoots every night in clear detail\*



Space Zoom puts you in the middle of the action, even at night. With 1.6x larger pixels\* and a wider Tele OIS~, photos and videos are brighter and more stable — making even distant subjects clearly stunning#.

Image simulated for illustrative purposes. \*Compared to Galaxy S23 Ultra. \*\*3x and 5x distances are optical zoom. 2x and 10x distances are optical quality zoom. 2x zoom must be enabled in the Camera Assistant app settings. Camera Assistant can be downloaded from the Galaxy Store. ~OIS meant Optical Image Stabilization. #AI Zoom is applied to distances between digital zoom lengths. Accuracy of results is not guaranteed. Results may vary depending on light condition and/or shooting conditions including multiple subjects, being out of focus or moving subjects.



## 12 Our most hyper-realistic mobile gameplay yet



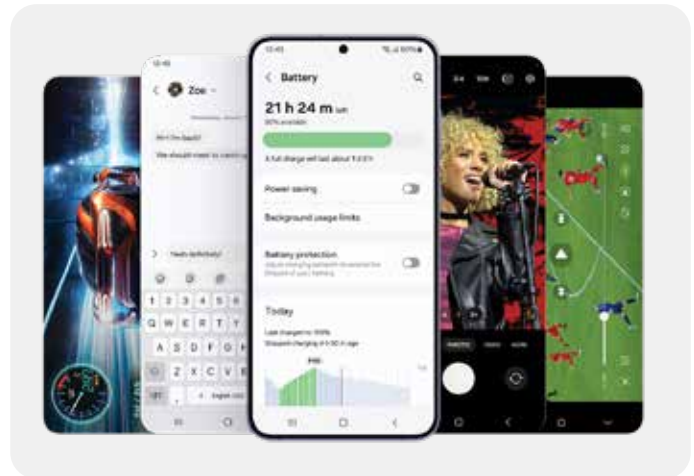
Victory can be yours with Snapdragon® 8 Gen 3\* for Galaxy. Faster processing gives you the power you need for all the gameplay you want. Manifest hyper-realistic shadows and reflections with ray tracing. Then get improved performance and heat dissipation with a Vapor Chamber nearly doubled in size\*\*.

## 13 2600 nits display. Our brightest adaptive mobile display under the sun



Our most immersive display comes with some major visibility upgrades. Corning® Gorilla®^^ Armor reduces reflections and improves visual clarity, even in direct sunlight. Then, an improved Vision Booster enhances contrast and color for a clearly exceptional experience~.

## 14 All-day battery~~ to play on and on#

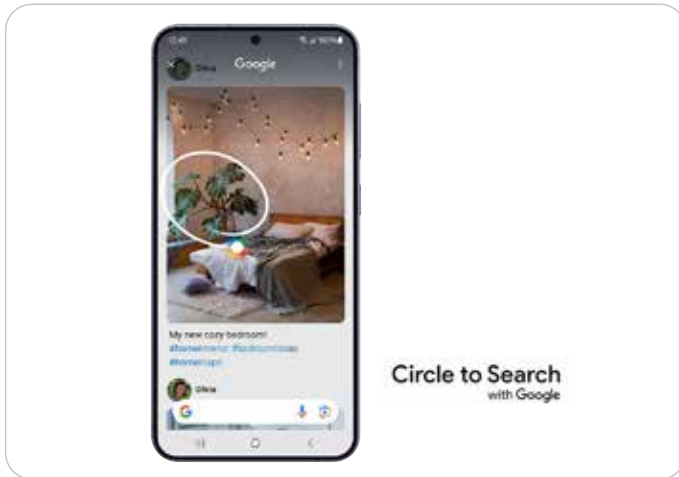


With massive capacity and greater energy efficiency, Ultra's battery gives you extra life when it matters most — you know, like the epic boss battle you've been gearing up for^.

Image simulated for representational purposes. Actual UI/UX may differ. \*Snapdragon is a trademark/registered trademark of Qualcomm Technologies, Inc. and/or its affiliated companies. \*\*Vapor Chamber installed on Galaxy S24 Ultra is 92% larger than that of Galaxy S23 Ultra. AP performance improvements shown compared to Galaxy S23 Ultra. Actual performance will depend on user environment, conditions and pre-installed software and applications. ^^Corning and Gorilla are trademarks/registered trademarks of Corning Incorporated. ~The Dynamic AMOLED 2X display on Galaxy S24 Ultra received a certification from VDE Germany for 100 percent Mobile Color Volume in the DCI-P3 color range, which means your images aren't washed out and you'll get unbelievably vivid colors regardless of differing levels of brightness. The display can achieve peak brightness of up to 2600 nits, improving the contrast between dark and light aspects of digital content for a more brilliant picture quality, with a 5,000,000:1 contrast ratio to make your mobile experience more immersive. ~~~Individual results may vary. ^Compared to Galaxy S23 Ultra ~Typical value tested under third-party laboratory condition. Typical value is the estimated average value considering the deviation in battery capacity among the battery samples tested under IEC 61960 standard. Actual battery life varies by network environment, features and apps used, frequency of calls and messages, the number of times charged, and many other factors. Estimated against the average usage profile compiled by UX Connect Research. Independently assessed by UX Connect research between 2023.11.25-2023.12.15 in US and UK with pre-release versions of SM-S921, SM-S926 and SM-S928 under default setting using LTE and 5G Sub6 networks. NOT tested under 5G mmWave network.

# Galaxy S24 | S24+

## 1 Circle it, find it. Just like that



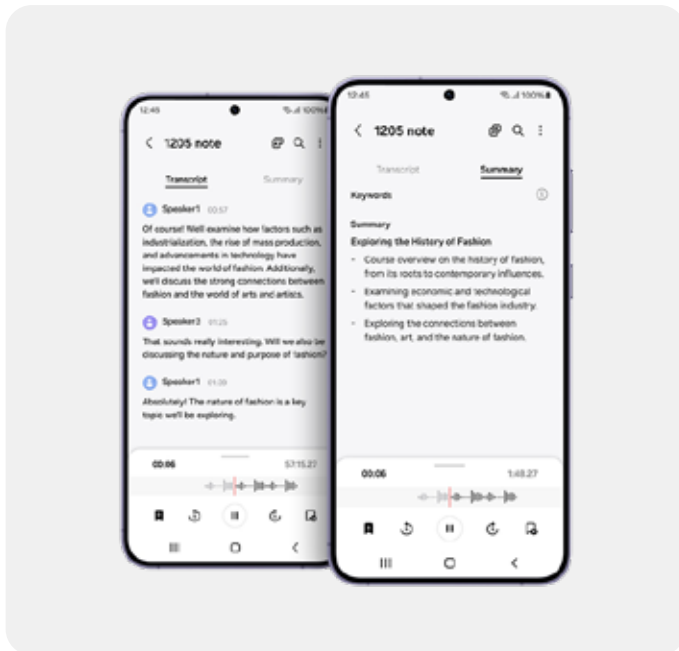
Search like never before with Circle to Search. Simply trace an object to get Google<sup>1</sup> Search results. It's a new visual way to find what you're looking for\*\*.

## 2 Live Translate\*. Simpler way to communicate



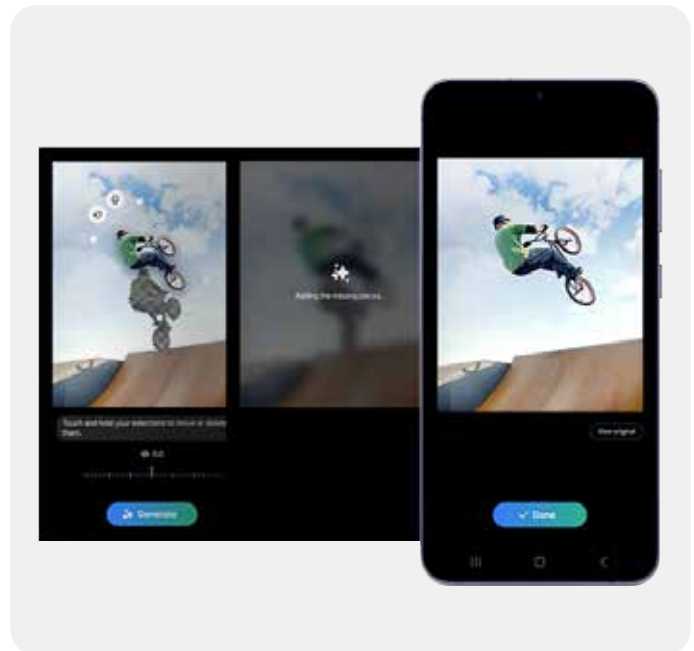
Get quick language translation on your next phone call. That's right, AI helps you communicate outside your own language while you talk on the phone. And get this, it even works on messaging.

## 3 AI can summarize your voice recordings~



Ready for your own personal assistant? Record your voice and AI will jot it down convert it into text, then intelligently summarize it. It even does language translations.

## 4 Resize it, Retouch it. Just like that



Unlock the magic of AI-powered photo editing. Now you can effortlessly perfect your photos, ensuring every image shines. But that's not all, even if you couldn't capture the shot you wanted, Generative Edit<sup>#</sup> can fill in backgrounds and make unwanted objects poof disappear.

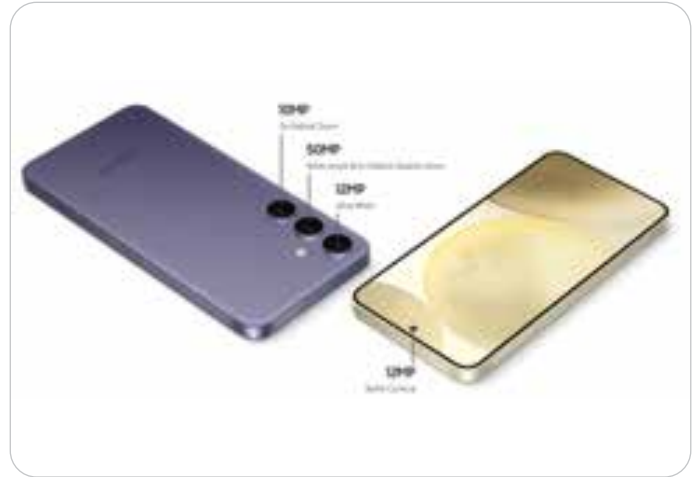
Image simulated for representational purposes. Actual UI/UX may differ. \*Live Translate requires a network connection and Samsung Account login. Live Translate is only available on the pre-installed Samsung Phone app. Certain languages may require language pack download. Service availability may vary by language. Accuracy of results is not guaranteed. Translating feature in Chat Assist may require Samsung Account login. Some chat applications may not support this feature. Certain languages may require language pack download. Service availability may vary by language. This feature is activated when a translatable language is detected. Accuracy of results is not guaranteed. Users shall rely on translated content at their own risk. <sup>1</sup>Google is a trademark/registered trademark of Google LLC. \*\*Results may vary depending on visual matches. Requires internet connection. Users may need to update Android to the latest version. Product functionality may be dependent on your app and device settings. Some functions may not be compatible with certain apps. Availability of the service varies by country and language. Accuracy of results is not guaranteed. ~Transcript Assist requires a network connection and Samsung Account login. Transcript Assist is only available on the pre-installed Samsung Voice Recorder app or files recorded using the pre-installed Samsung Phone app. Voice recording feature in the pre-installed Samsung Phone app may not be supported in some countries. Audio files must be under 3 hours in duration to be processed. Summarizing feature in Transcript Assist can be activated when a certain number of characters is met. Service availability may vary by language. Accuracy of results is not guaranteed. <sup>#</sup>Generative Edit requires a network connection and Samsung Account login. Editing with Generative Edit results in a resized photo up to 12MP. A visible watermark is overlaid on the image output upon saving in order to indicate that the image is generated by AI. The accuracy and reliability of the generated output is not guaranteed. Image may be distorted.

## 5 Big, bigger and faster\*



They're the upgrades you've waited for. More screen. More battery. More processing power. There's so much more to love about Galaxy S24 and S24+. Especially now that Galaxy S24+ comes with the highest screen resolution on a Galaxy device: QHD+\*\*.

## 6 Get the details on Camera~



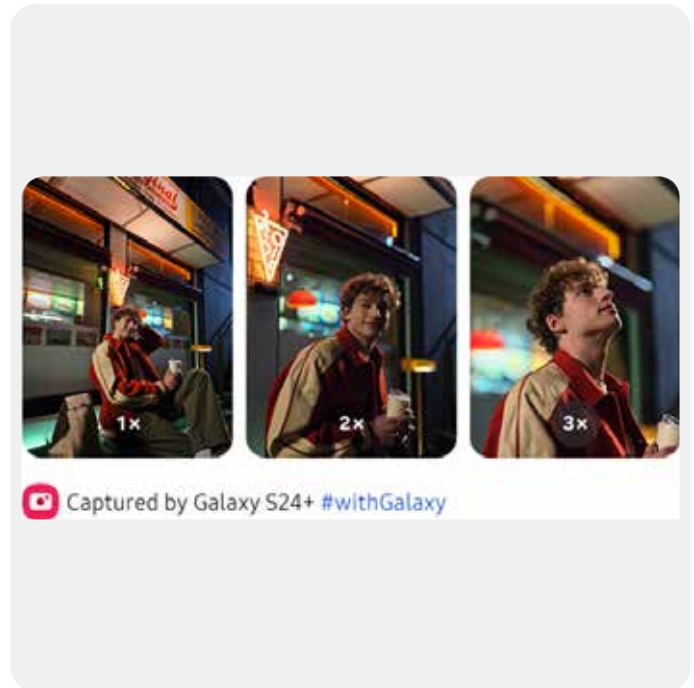
Whether you're taking a super sweet selfie, shooting wide angle pics or zooming in, these cameras will help ensure you leave with a pixel-perfect shot.

## 7 50MP. Mega Pixels



A true pixel powerhouse that will not disappoint. Ever. Snap high-res pics for that will no doubt withstand the test of time for years to come.

## 8 Shoot far. Even in the dark



Capture bright, colorful, clear photos, even in the dark with AI ISP. Finally, the portraits you've been dreaming of. Zoom in 2x, or even 3x — it doesn't really matter. Each distance can be as clear as day even though it's technically night#.



## 9 Get closer with every pinch\*



Just keep pinching. Go from 1x to 2x or even 3x+. AI Zoom keeps pictures high-quality: crisp, clear and super sharp — without losing much detail\*\*.

## 10 Stronger Vapor Chamber. Game on



'This new and improved heat dissipation system helps you keep gaming at optimal performance. Our latest Vapor Chamber is bigger than before~, with an integrated liquid-type thermal interface material.

## 11 Our brightest adaptive mobile display under the sun



Level up your game with these two massive screens. With increased display size and ultra-slim bezels, Galaxy S24's 15.64cm FHD+ display# and Galaxy S24+'s 16.91cm QHD+ display offer more screen real estate than ever before. Plus, enjoy optimal color and contrast with Vision Booster on both displays^.

Image simulated for representational purposes. Actual UI/UX may differ. \*30X Space Zoom includes 3x optical zoom and 30x digital zoom with Super Resolution technology. Zoom distances past 3x zoom may express some image deterioration. \*\*2x zoom must be enabled in the Camera Assistant app settings. Camera Assistant can be downloaded from the Galaxy Store. \*\*AI Zoom is applied to distances between digital zoom lengths. Accuracy of results is not guaranteed. ~Compared to Galaxy S23 and S23+ \*Measured diagonally, Galaxy S24's screen size is 15.64cm in the full rectangle and 15.23cm accounting for the rounded corners and Galaxy S24+'s screen size is 16.91cm in the full rectangle and 16.45cm accounting for the rounded corners; actual viewable area is less due to the rounded corners and camera hole. ^The Dynamic AMOLED 2X display on Galaxy S24 and S24+ received a certification from VDE Germany for 100 percent Mobile Color Volume in the DCI-P3 color range, which means your images aren't washed out and you'll get unbelievably vivid colors regardless of differing levels of brightness. The display can achieve peak brightness of up to 2600 nits, improving the contrast between dark and light aspects of digital content for a more brilliant picture quality, with a 5,000,000:1 contrast ratio to make your mobile experience more immersive.



# Take your experience to the next level

## Galaxy Watch5

Screen size	Sapphire Crystal Glass 44mm variant: 34.5mm* (450x450) Super AMOLED, Full Color Always On Display 40mm variant: 30.2mm* (396x396) Super AMOLED, Full Color Always On Display
Connectivity	LTE (eSim models only), BT 5.2, Wi-Fi 2.4GHz & 5GHz, NFC Location: GPS/Glonass/Beidou/Galileo
Durability	5ATM + IP68** / MIL-STD-810H
Battery	44mm: 410mAh*** 40mm: 284mAh***
Processor	1.18GHz
Colours	Graphite, Silver, Pink Gold



## Galaxy Watch5 Pro



Screen size	Sapphire Crystal Glass 45mm variant: 35.6mm* (450x450) Super AMOLED, Full Color Always On Display
Connectivity	LTE (eSim models only), BT 5.2, Wi-Fi 2.4GHz & 5GHz, NFC Location: GPS/Glonass/Beidou/Galileo
Durability	5ATM + IP68** / MIL-STD-810H
Battery	44mm: 590mAh***
Processor	1.18GHz
Colours	Gray Titanium, Black Titanium

Take your experience to the next level

## Galaxy Watch4

Screen size	Dial: 44mm(1.7") / 40mm(1.6") Screen: 1.4" / 1.2" SUPER AMOLED
Connectivity	BT 5.0 / Wi Fi 2.4GHz 5GHz / NFC / GPS
Durability	Corning Gorilla Glass Dx Armour aluminium body IP68, 5ATM & MIL STD 810G water resistance*
Battery	361 / 247 mAh with fast charging
Processor	1.18GHz
Colours	Silver, Black, Green, Pink



## Galaxy Watch4 Classic



Screen size	Dial: 46mm(1.8") / 42mm(1.6") Screen: 30.5mm(1.4") / 35.5mm(1.2") Super AMOLED
Connectivity	BT 5.0 / Wi Fi 2.4GHz 5GHz / NFC / GPS
Durability	Corning Gorilla Glass Dx Stainless steel body IP68, 5ATM & MIL STD 810G water resistance*
Battery	361 / 247 mAh with fast charging
Processor	1.18GHz
Colours	Black, Silver

# Take your experience to the next level



**Galaxy Buds2 Pro**



**Galaxy Buds2**

<b>Design</b>	Open type	Open type
<b>Sound</b>	2 way speaker (Woofer + tweeter) 3 level adjustable Ambient sound ANC supported	2 way speaker (Woofer + tweeter) 3 level adjustable Ambient sound ANC supported
<b>Connectivity</b>		v5.2
<b>Mics</b>		6
<b>Special Features</b>		Accelerometer, Gyro Sensor, Hall Sensor, Proximity Sensor, Touch Sensor, VPU (Voice Pickup Unit) Compatible Specification of Smartphone - Android 7.0 ↑, 1.5GB ↑
<b>Battery</b>		Battery Capacity (Earbud)- 61 mAh Battery Capacity (Case) -472 mAh
<b>Colours</b>		White, Lavender, Olive , Graphite




# Take your experience to the next level



**Galaxy Buds Pro**



**Galaxy Buds Live**

<b>Design</b>	Open type	Open type
<b>Sound</b>	2way speaker with 11mm woofer and 6.5mm tweeter	One Way 1.2cm (12mm speakers with bass duct)
	AKG Tuned sound	AKG Tuned sound
<b>Connectivity</b>	BT v5.0	BT v5.0
<b>Mics</b>	3	3
<b>Special Features</b>	Intelligent ANC Professional sound with 2-way speakers <ul style="list-style-type: none"><li>• 11mm woofer for full bass</li><li>• 6.5mm tweeter with low distortion</li></ul> 360 Audio Dolby Atmos 	ANC for Open type Always on Mic for Bixby Spotify Controls Gaming Mode
<b>Battery</b>		60mAh (each Bud) / 472 mAh (case)
		Up to 8hrs (Buds) / 29hrs (with case) playtime
	Wireless Charging	Wireless Charging
<b>Colours</b>	Phantom Violet, Phantom Black and Phantom Silver	Mystic Black, Mystic Bronze and Mystic White

Images simulated. \*The playtime hours shown are based on internal test lab conditions. Time may vary depending upon individual usages.

\*Based on internal testing. Audio playback time tested by pairing a pre-production Galaxy Buds+ to a recently released Galaxy smartphone with default settings (Ambient Sound function off). Samsung travel adapter used for charging. Actual battery life and charging time may vary by usage conditions, number of times charged and many other factors.

# Exclusive benefits



## Secure, effortless and contactless payments

Samsung pay: the simple way.

[Click to know more](#)



**Secured  
by Knox**

## Defense-grade security

Knox security locks in your privacy.

[Click to know more](#)



**Samsung  
Upgrade**

## Upgrade to the latest Galaxy every year

Keep getting back from Samsung.

[Click to know more](#)

# Samsung services: We've got you covered

**3300+**

Service center touchpoints



Convenient access

**24 x 7**

Support



Digital Service Centre



**Extended warranty**

## Extended warranty\*

A comprehensive warranty that lets you get the most out of your Samsung televisions for a longer period.

[Click to know more](#)

**Assuring a safe and hygienic experience**





# SAMSUNG

**Please dispose of e-waste and plastic waste responsibly.**

For more information or for e-waste pick up  
please WhatsApp us on 1800 5 7267864.

Connect with us



**Samsung  
Digital Service Centre**



**WhatsApp**



Follow us



**samsungindia**



**SamsungIndia**



**SamsungIndia**



**SamsungIndia**

Registered Address: Samsung India Electronic Pvt. Ltd.,  
C.I.N. - U31900DL1995PTCO71387, 6<sup>th</sup> Floor, DLF Center, Sansad Marg, New Delhi - 110001.

All features and specifications mentioned herein can be changed without prior notice. Log on to [www.samsung.com/in](http://www.samsung.com/in) for more details.  
Products shown herein are for representational purpose only, actual product may vary.