

# Galaxy Book2 Pro

NP930XED/NP950XED

Processor	Intel® Evo™ Platform
Display	33.78 cm   39.62 cm* FHD AMOLED
Memory	16 GB LPDDR5 RAM
Storage	512 GB
Battery	68 Wh (Up to 21 hrs video playback <sup>1</sup> )



● Silver



● Graphite

Images simulated. For representational purposes only. Colours as per the availability. Intel Evo Platform is a product of Intel Corporation. Intel Evo Platform is a trademark or registered trademark of Intel Corporation.  
\*Display size is measured diagonally, actual viewable area is less due to rounded corners and the camera hole. <sup>1</sup>Typical value tested under third party laboratory conditions. Actual Battery life may vary depending on network environment, usage patterns and other factors. The battery samples are tested under IEC 61960 standard. Rated minimum capacity is 67 Wh.

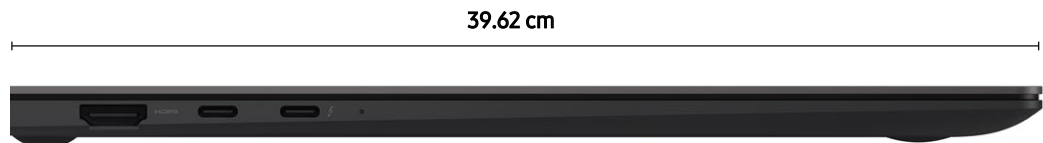
## 1 Light. Powerful. Made to move in style

The world's thinnest in its class\*. Galaxy Book2 Pro sacrifices nothing on performance yet weighs in super-light with a slim profile.

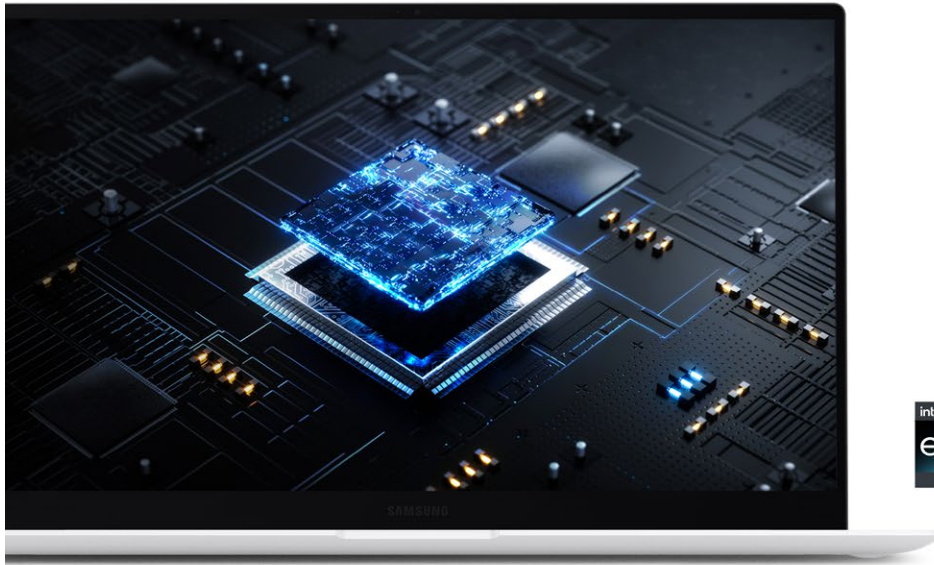


## 2 Stylish thin & light^

This stylish Galaxy Book 2 Pro is 11.2 mm thick and 870 gms for the Internal model.



### 3 Intel® Evo™ Platform outperforms everything else



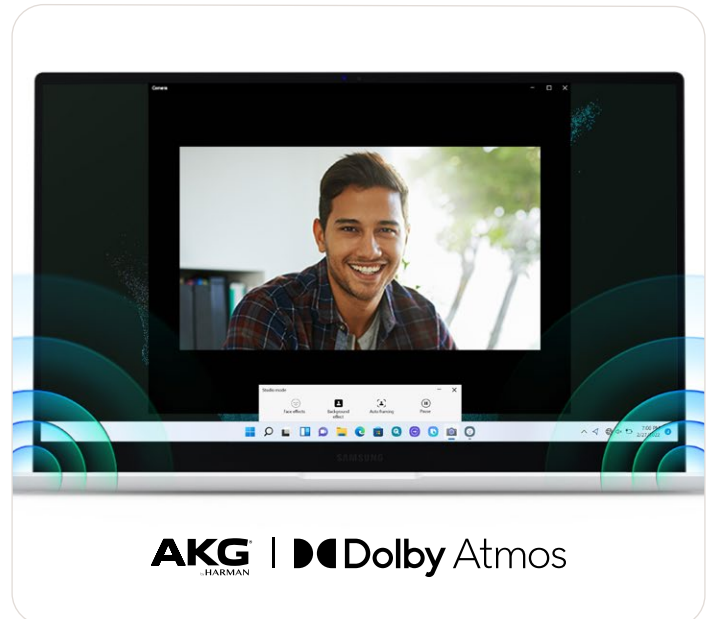
The game-changing 12<sup>th</sup> Gen Intel® Core™ processor\*, with amazing graphics, superfast LPDDR5 RAM, and an advanced cooling system will turn everything easy.

### 4 Super clear pro-display



Enjoy an FHD Super AMOLED touch screen with colour volume of 120%, and a bright display for an amazing viewing experience.

### 5 Hi-res video



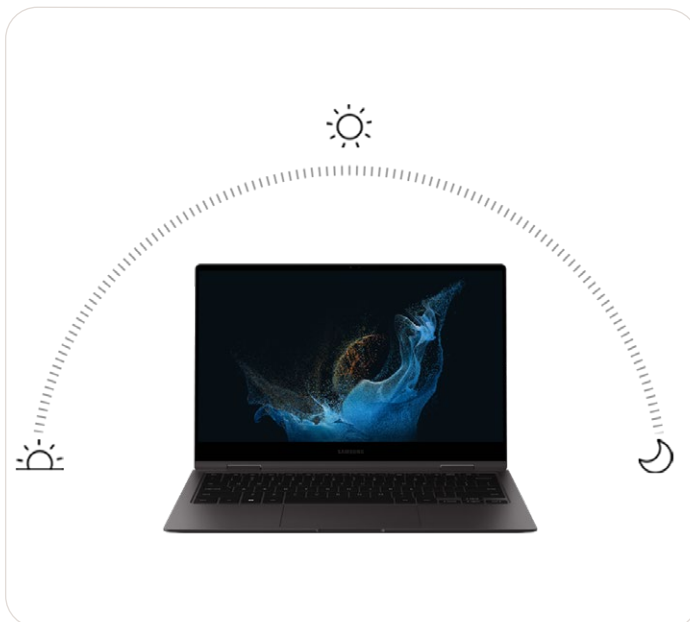
Experience FHD camera with auto framing, Intelligent Noise Cancelling & audio by AKG and Dolby Atmos.

## 6 Wi-Fi 6E\* for faster data speed



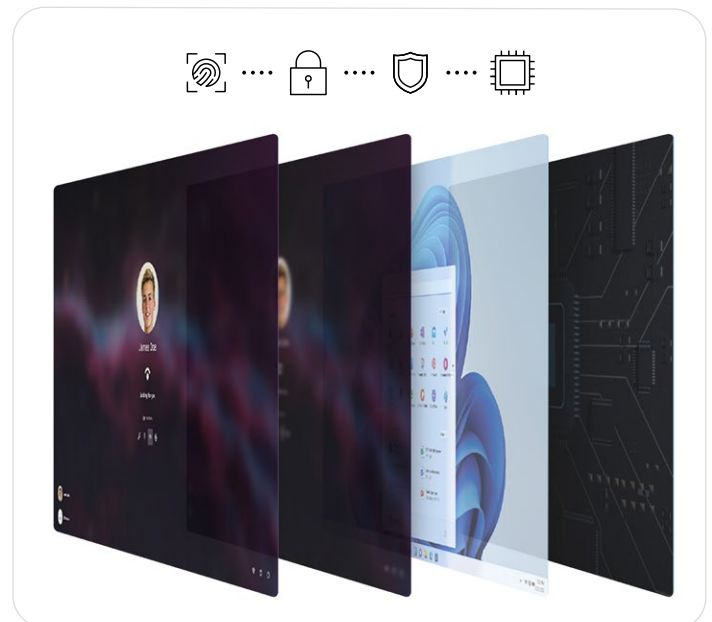
Experience less congestion and faster response times with the ultra-fast data speeds of the 6GHz band, more spectrum, and wider channels.

## 7 Long lasting battery



Enjoy up to 21 hours of video playback with a durable battery<sup>1</sup> that goes on and on.

## 8 Advanced secured-core PC<sup>1</sup>



Protect your laptop from firmware vulnerabilities, shield the operating system from attacks, and boot securely.

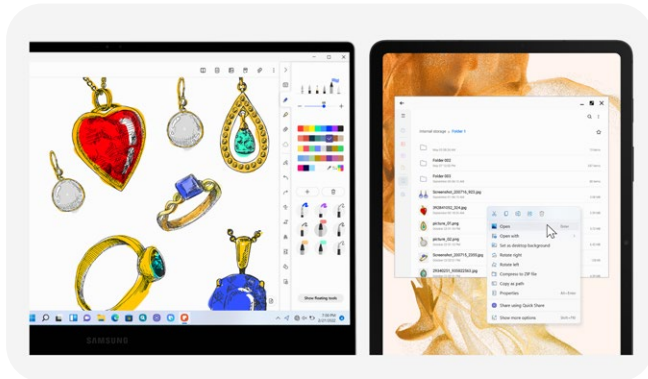


## 9 Seamless Galaxy ecosystem experience

Let your Galaxy devices work together effortlessly and sync perfectly with your on-the-move lifestyle\*.

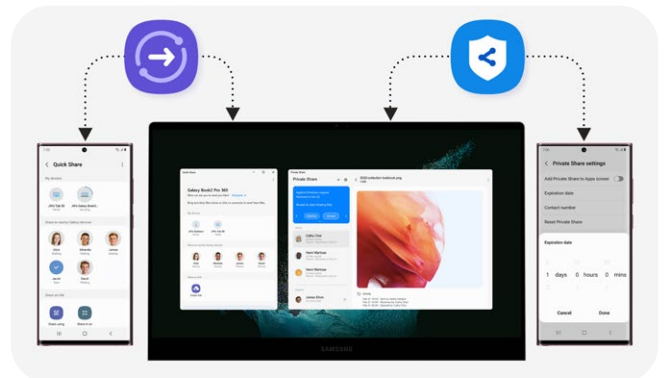


### Multiply productivity with double screen



Duplicate or extend instantly by connecting your Galaxy Book2 Pro with a Galaxy Tab wirelessly to add a second screen<sup>^</sup>.

### Share seamlessly<sup>1</sup>



The Quick Share feature conveniently sends files wirelessly across Samsung Galaxy devices. Private Share allows to encrypt files using blockchain technology.

### What's on your phone, now on your PC

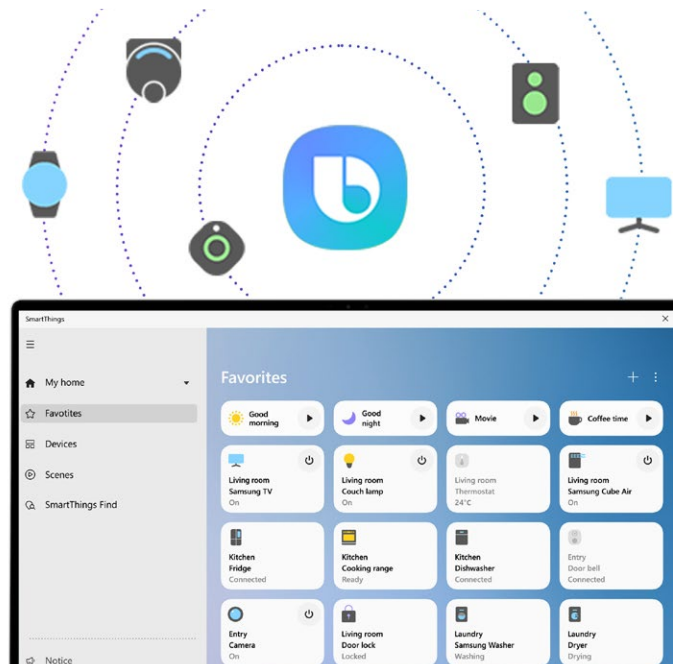


Enable your mobile apps to Galaxy Book2 Pro with Link to Windows<sup>#</sup>. Enjoy a seamless inter-device experience for ultimate convenience.

Images simulated. \*Galaxy Tab S8, Galaxy S22 Ultra, Galaxy Watch4, Galaxy Buds2 and S Pen shown are sold separately. ^Second screen is available on selected Galaxy Tablet models only, including Galaxy Tab S7, S7+, S7 FE, S8, S8+ and S8 Ultra. Samsung Multi Control requires updated tablets with One UI 4.1 or higher versions and works on Galaxy Book series devices released in 2021 or later with either Samsung Settings v1.5 (Intel) or Samsung Settings v3.3 (ARM). 1. Quick Share available on Galaxy device with One UI 2.1 or later versions installed, and uses Bluetooth Low Energy and Wi-Fi. # Link to Windows - Your Phone app Users must link their Samsung Galaxy device to their Windows PC through 'Link to Windows' on phone and Your Phone App on PC and follow the set-up prompts, including being signed into the same Microsoft account. Third Party logos/images are registered marks of respective third parties.

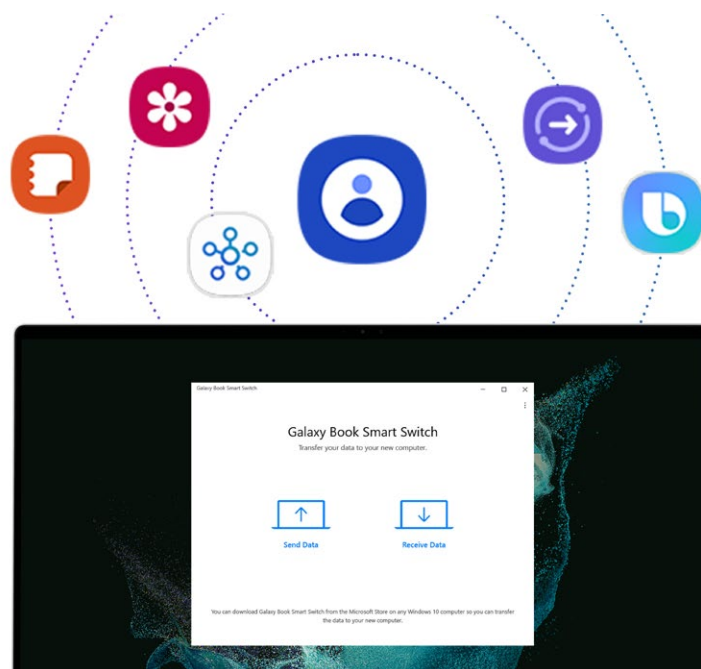
## 10 Bixby\* and SmartThings

Use smart voice command to ask Bixby about anything you want to know. You even have an option to control SmartThings-compatible devices from your PC.



## 11 Smart Switch and Single Sign-On

Galaxy Book Smart Switch^ transfers your files and settings from your old device and Single Sign-On# gets you into your Galaxy Ecosystem with just one log-in.



# SAMSUNG

**Please dispose of e-waste and plastic waste responsibly.**

For more information on e-waste/plastic waste,  
please WhatsApp us on 1800 5 7267864.

Connect with us



**Samsung  
Digital Service Centre**



**WhatsApp**



Follow us



samsungindia



Samsungmobileindia



SamsungIndia



SamsungIndia

Registered Address: Samsung India Electronic Pvt. Ltd.,  
C.I.N. - U31900DL1995PTCO71387, 6<sup>th</sup> Floor, DLF Center, Sansad Marg, New Delhi - 110001.

All features and specifications mentioned herein can be changed without prior notice. Log on to [www.samsung.com/in](http://www.samsung.com/in) for more details.  
Products shown herein are for representational purpose only, actual product may vary.