

# Galaxy Buds2 Pro

<b>Sound</b>	<b>24 Bit</b> SSC(Samsung Seamless Codec) <b>2-way speakers</b> (10mm woofer & 5.3mm Tweeter) <b>Advanced Intelligent Active Noise Cancellation (ANC)</b> Voice Detect: Auto Switching ANC/Ambient Mode
<b>Bluetooth version</b>	Bluetooth 5.3 (LE Audio ready)
<b>Sensor</b>	3 High-SNR Mics + VPU + DNN + Personalised Beamforming
<b>Earbud weight</b>	5.5gm
<b>Case dimension (HxWxD)</b>	21.6mm x 19.9mm x 18.7mm



**Bora Purple**



**White**



**Graphite**

## 1 Ultimate Hi-Fi Sound



### 24-bit Hi-Fi audio

Your world of clarity. Minimized perceptual sound loss, steady and high-quality sound during processing for clearer sound than ever before.



### Intelligent ANC & Voice Detect

The first 'ALL' HIGH-SNR Mics\* in the new Galaxy Buds2 Pro filter out 40% more noise than Buds Pro. Voice Detect function senses your voice- turns on Ambient mode for instant conversations.

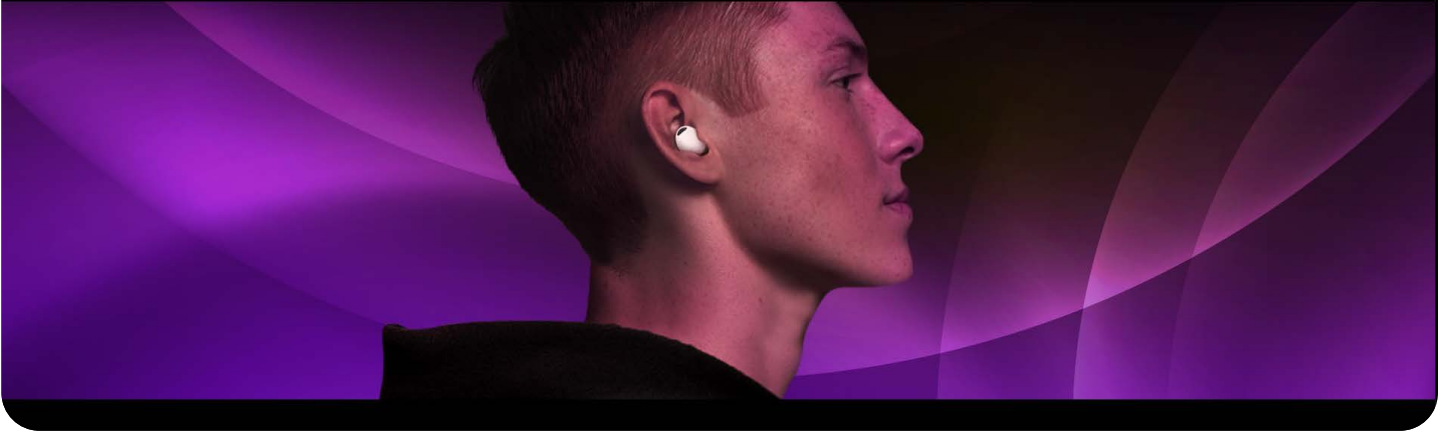
Image simulated for representational purpose only.

\* 24-bit Hi-Fi supported when Galaxy Buds2 Pro is connected with Galaxy Smartphone with One UI 4.x. \*The first SSC (Samsung Seamless Codec) Hi-Fi CODEC supported in Galaxy Buds Series.

\* High SNR (Signal to Noise Ratio) mic helps keep the noise floor inaudible even when the signal is amplified.

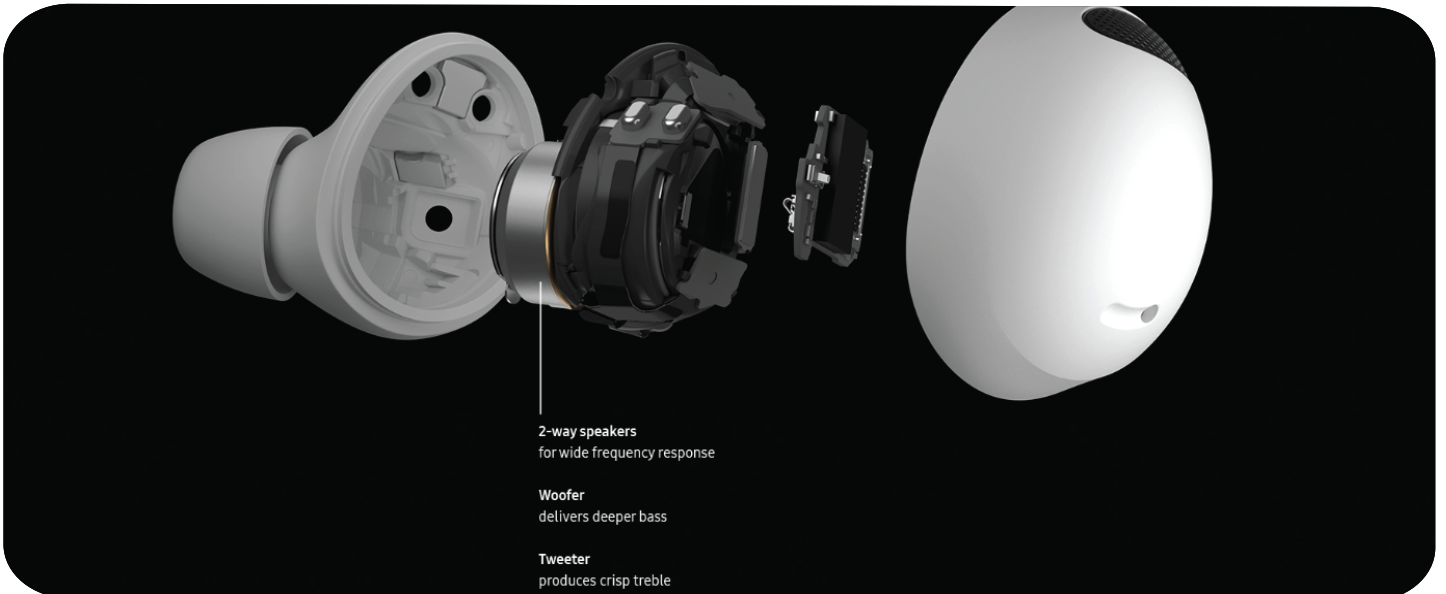
360 AUDIO

Hear it  
like you're there



## 360 Audio

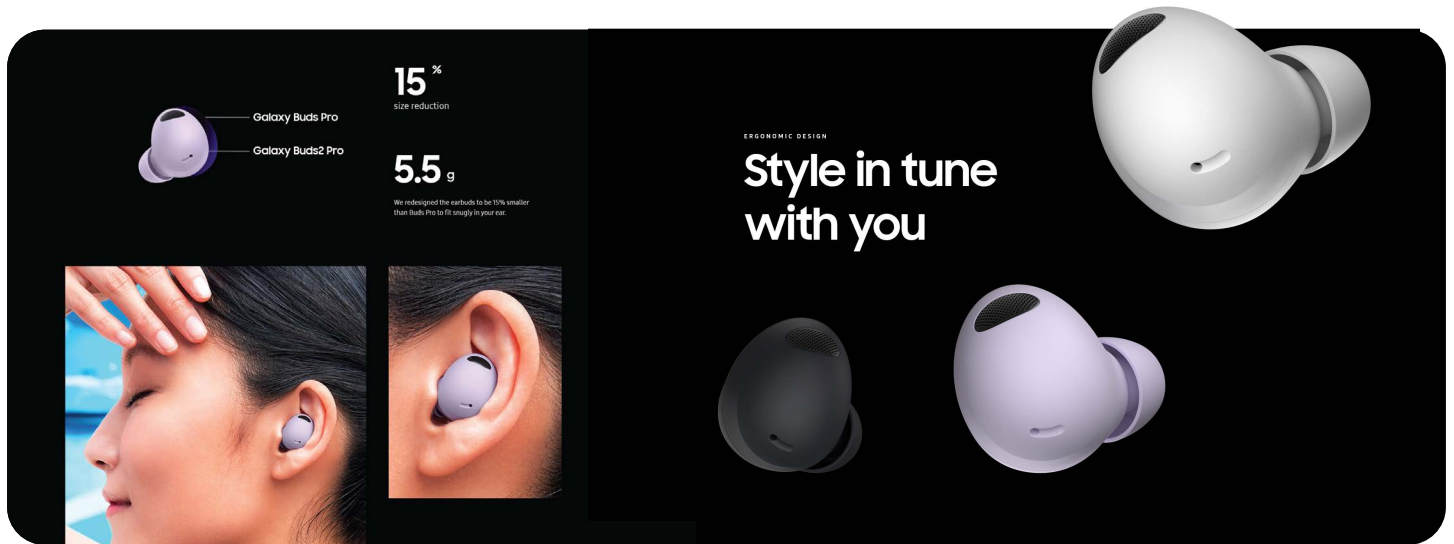
The 360 Audio algorithms with direct multi-channel (5.1, 7.1, Dolby Atmos\*) & enhanced Dolby Head Tracking creates an ultimate immersive experience.



## Crystal Quality Voice Call\*

AI-powered DNN with Personalized Beamforming extracts your voice from the noise and makes it louder & clearer by self-learning from your wear.

## 2 Comfortable fit



### Ergonomic Design

15% smaller in size\*. Your ears feel comfortable even after hours of use. Reduced space to wobble- designed to stay put even during dynamic movements.

### Acoustic, Aerodynamic Design

Increased air flow between Vent Hole and Nozzle Grill decreases muffing sound, and the 3-Mic system reduces the wind noise when you're listening to music.

## 3 Galaxy Connected Experience



### Seamless Connectivity

Connect the Galaxy Buds2 Pro to your Galaxy devices, and even your TV\*. If you get a phone call, it automatically switches the connection from TV to phone.

### SmartThings Find\*

Track your missing Buds with SmartThings Find even when they are offline. You can even get notified if you've left them behind.

Image simulated for representational purpose only.

\*Size 15% lesser vs Buds Pro. \*From '22 Galaxy Smart TV, Smart Monitor. \*Required that Buds2 Pro is registered on the TV based on the same Samsung Account.

# Exclusive benefits



**Secure, effortless and contactless payments**

Samsung pay: the simple way

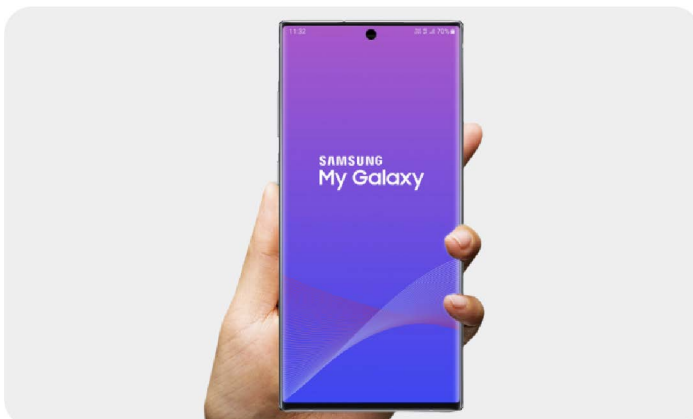
[Click to know more](#)



**Secured by Knox**

Knox security locks in your privacy

[Click to know more](#)



**Samsung Upgrade**

**Upgrade to the latest Galaxy every year**

Keep getting back from Samsung

[Click to know more](#)

# SAMSUNG

**Please dispose of e-waste and plastic waste responsibly.**

For more information or for e-waste pick up  
please WhatsApp us on 1800 5 7267864.

Connect with us



**Samsung  
Digital Service Centre**



**WhatsApp**



Follow us



samsungindia



SamsungIndia



SamsungIndia



SamsungIndia

Registered Address: Samsung India Electronic Pvt. Ltd.,  
C.I.N. - U31900DL1995PTCO71387, 6<sup>th</sup> Floor, DLF Center, Sansad Marg, New Delhi - 110001.

All features and specifications mentioned herein can be changed without prior notice. Log on to [www.samsung.com/in](http://www.samsung.com/in) for more details.  
Products shown herein are for representational purpose only, actual product may vary.